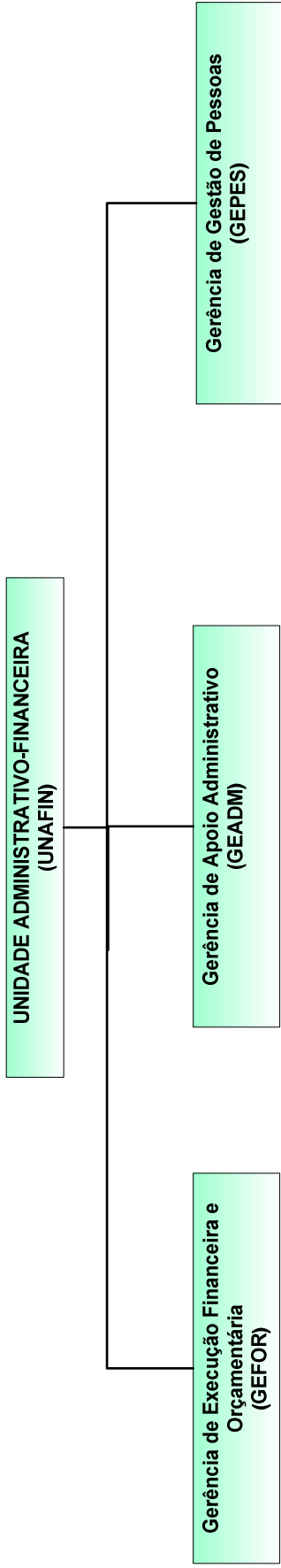
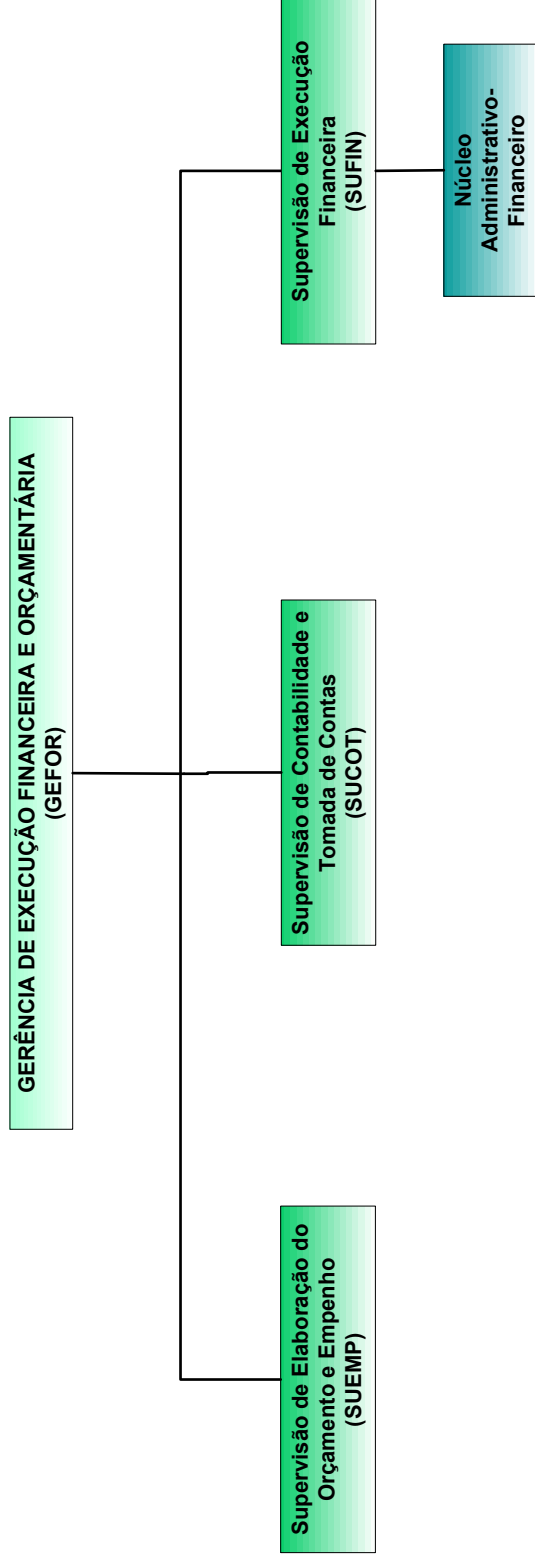
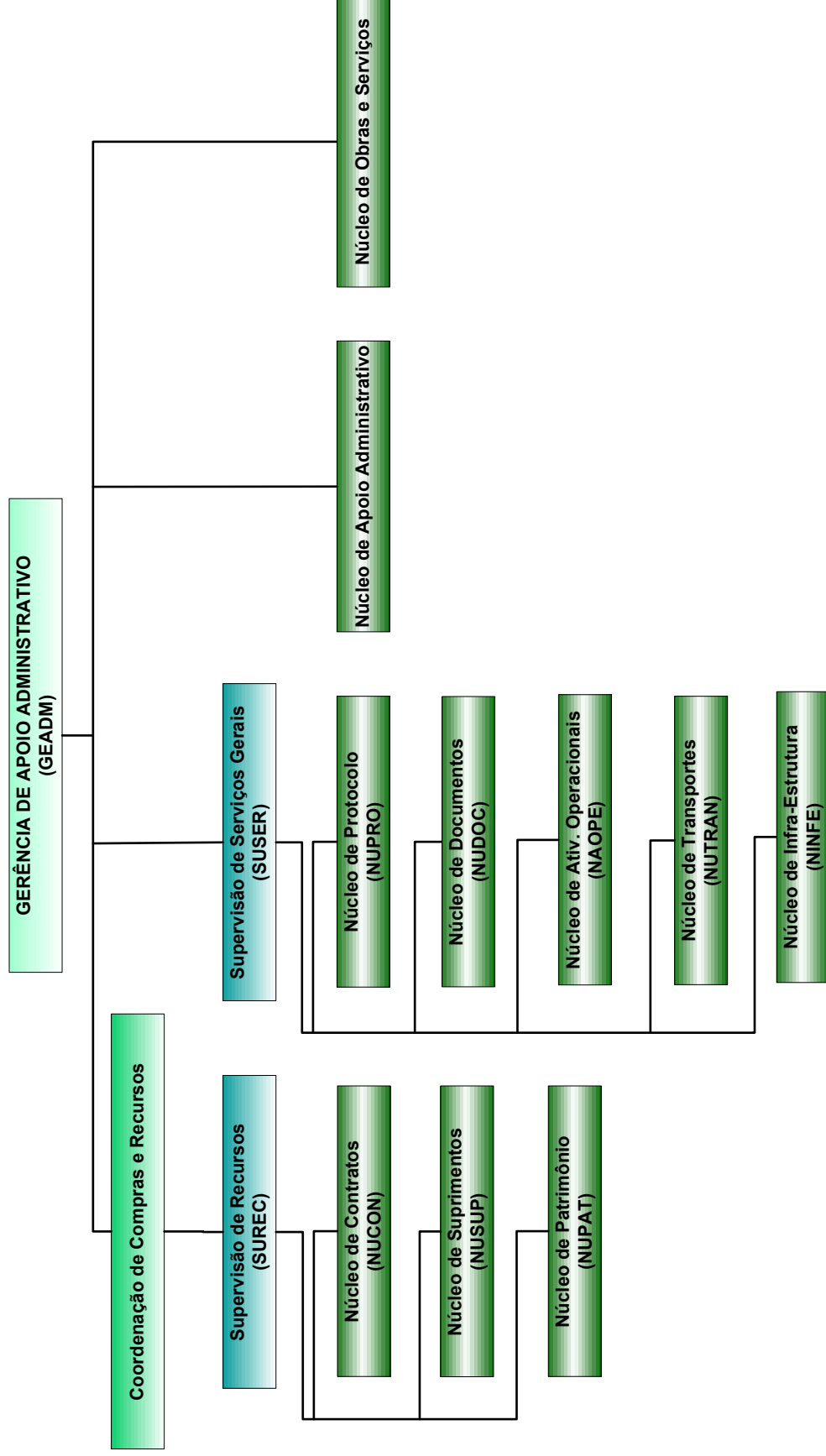


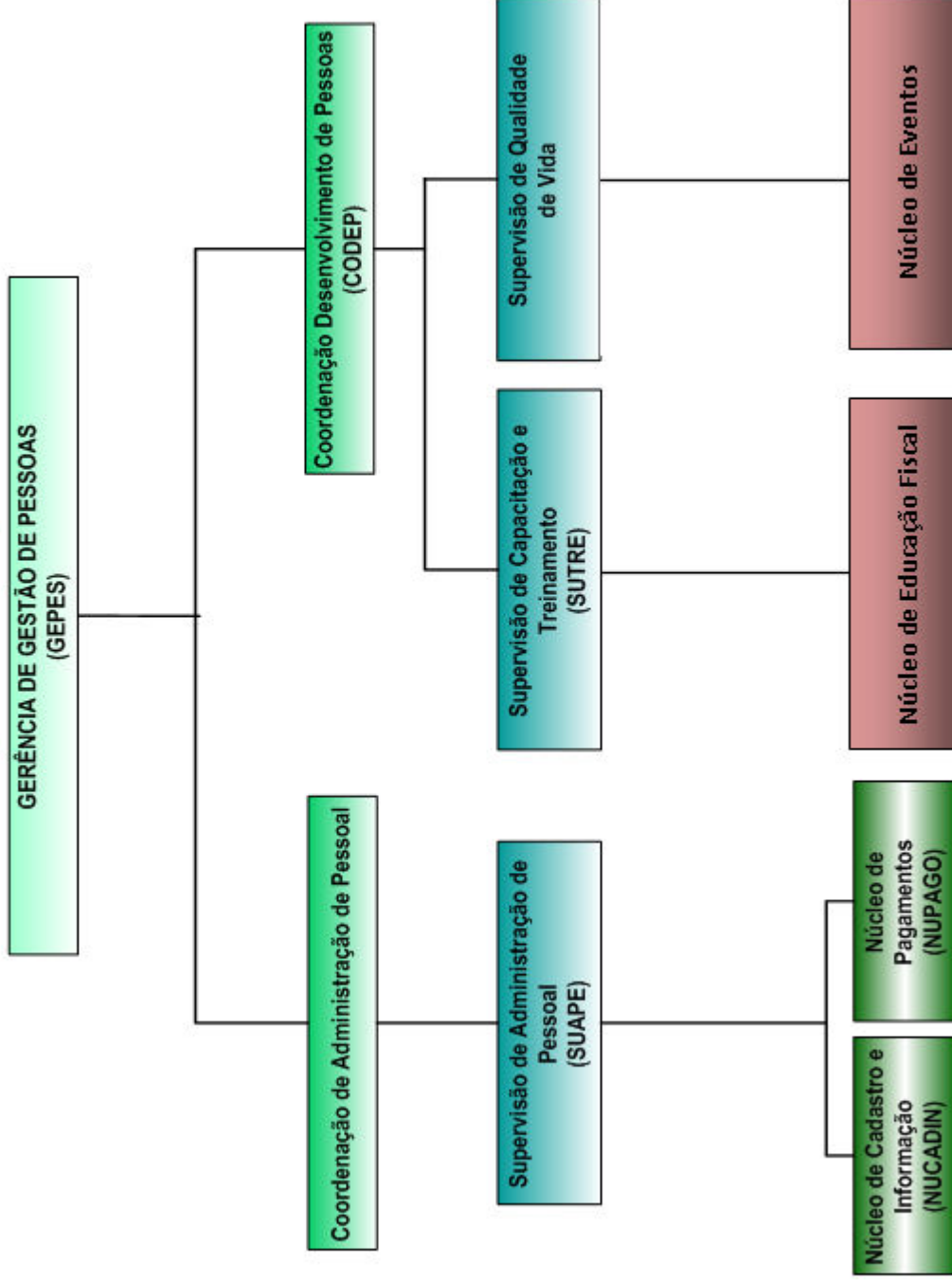
**LEGENDA:**  
----- Órgão vinculado à SEFAZ-PI

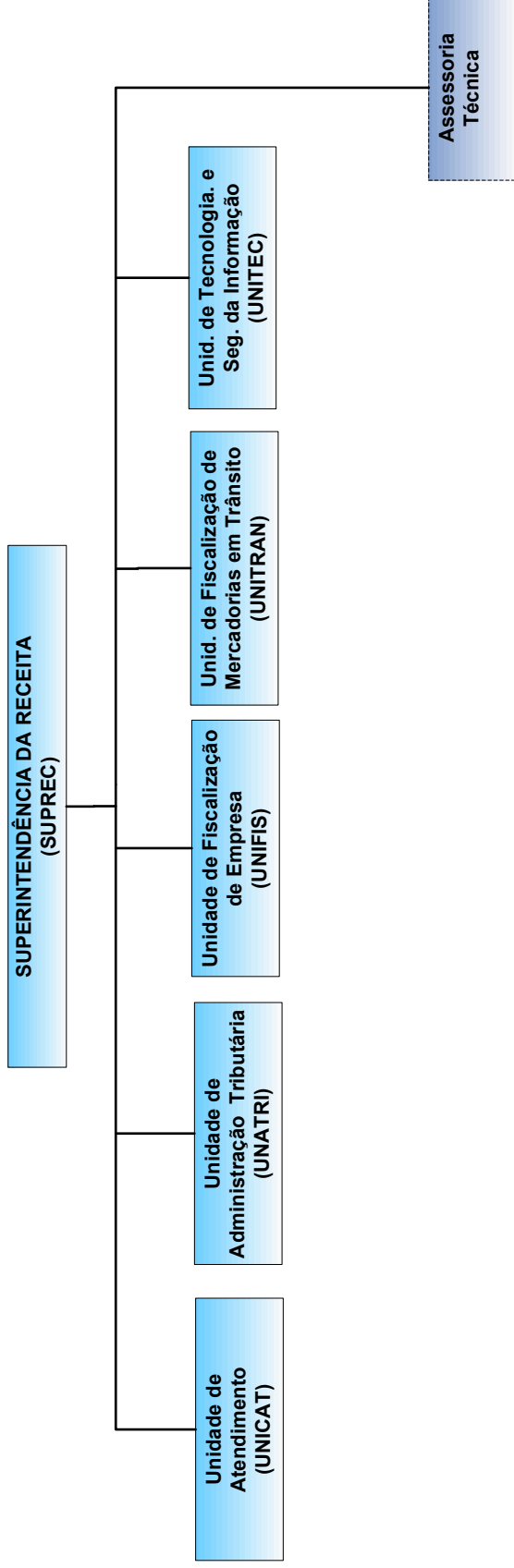




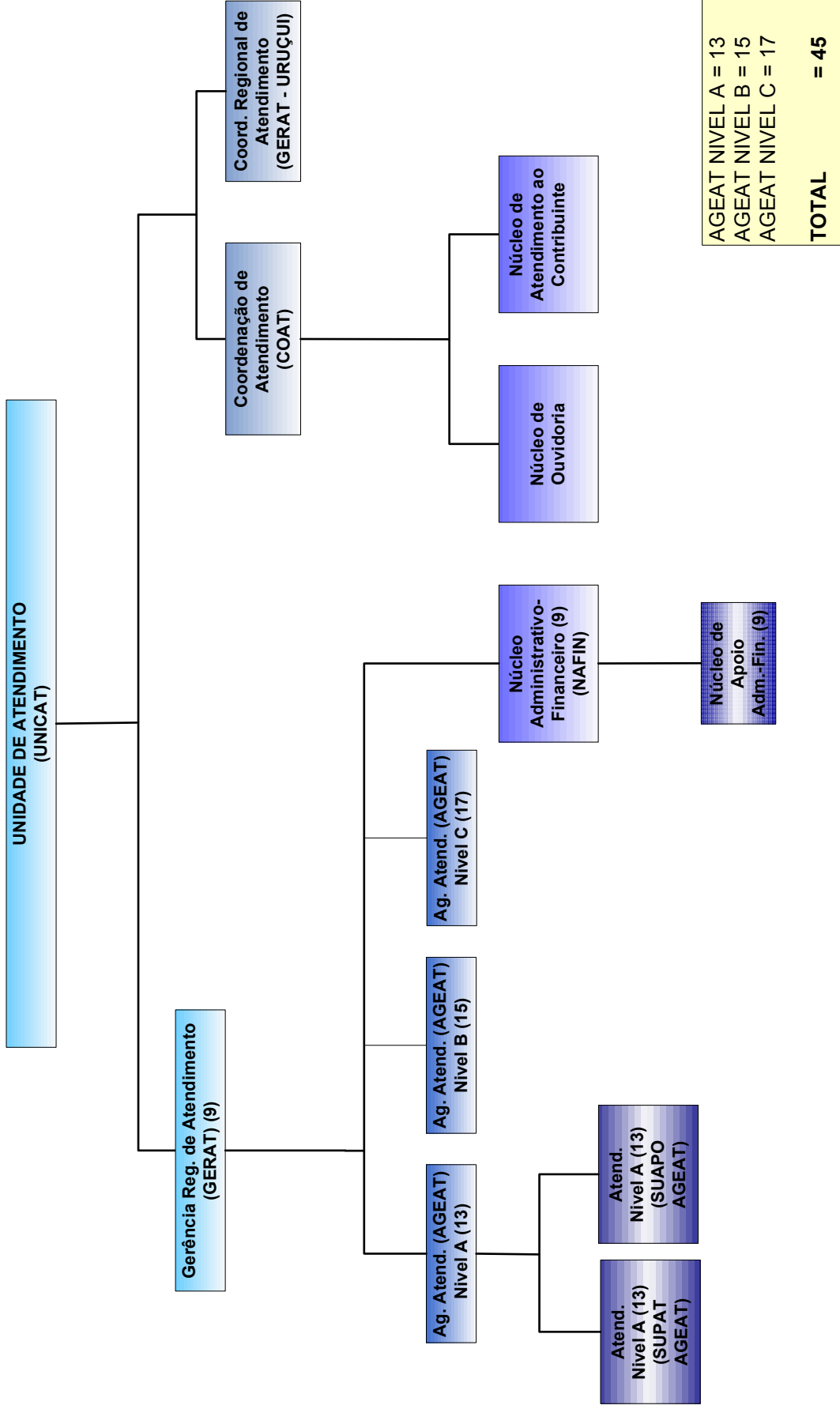


UNAFIN → Gerência de Gestão de Pessoas

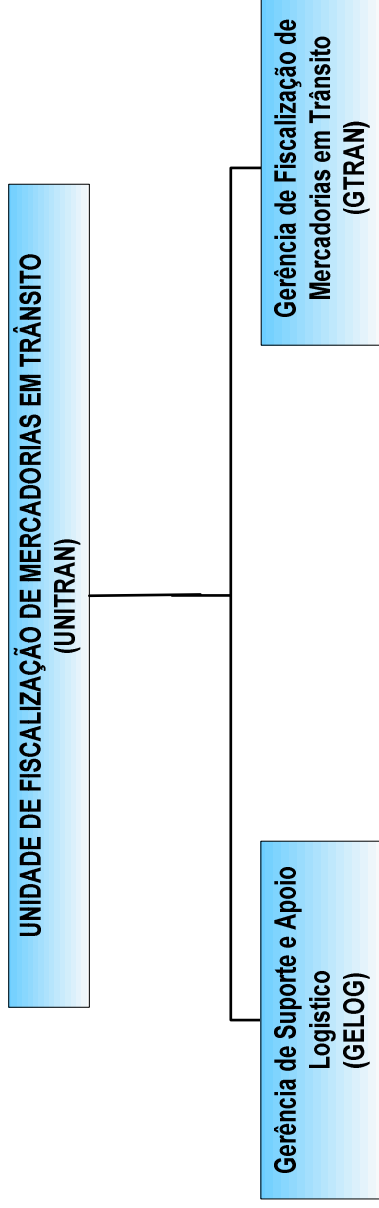




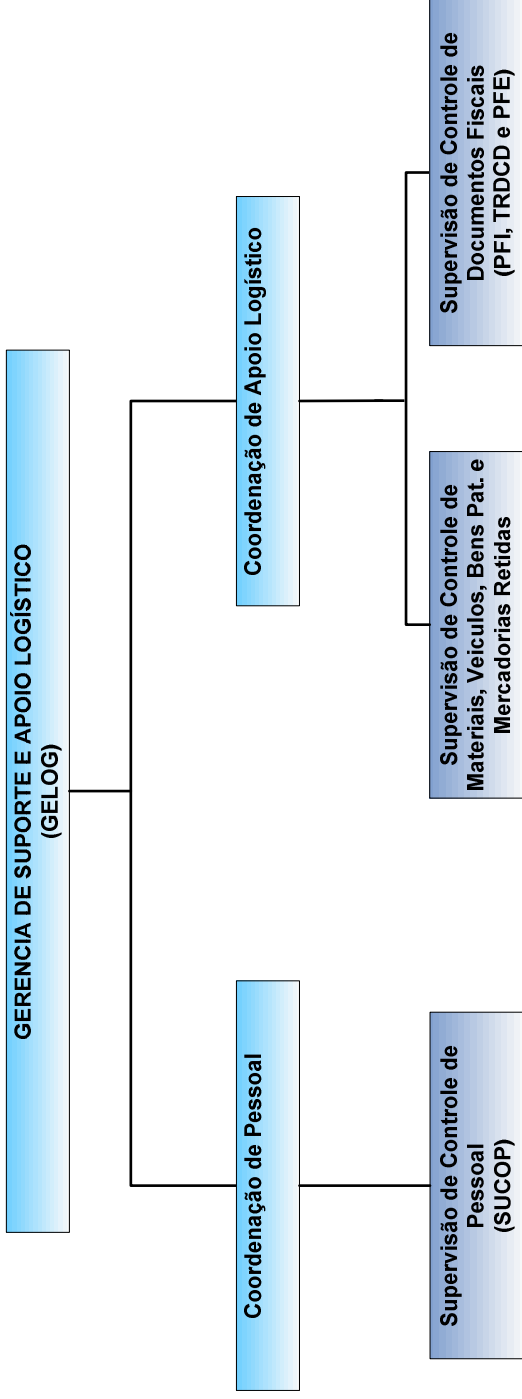
**LEGENDA:**  
----- Assessoria aguardando LEI

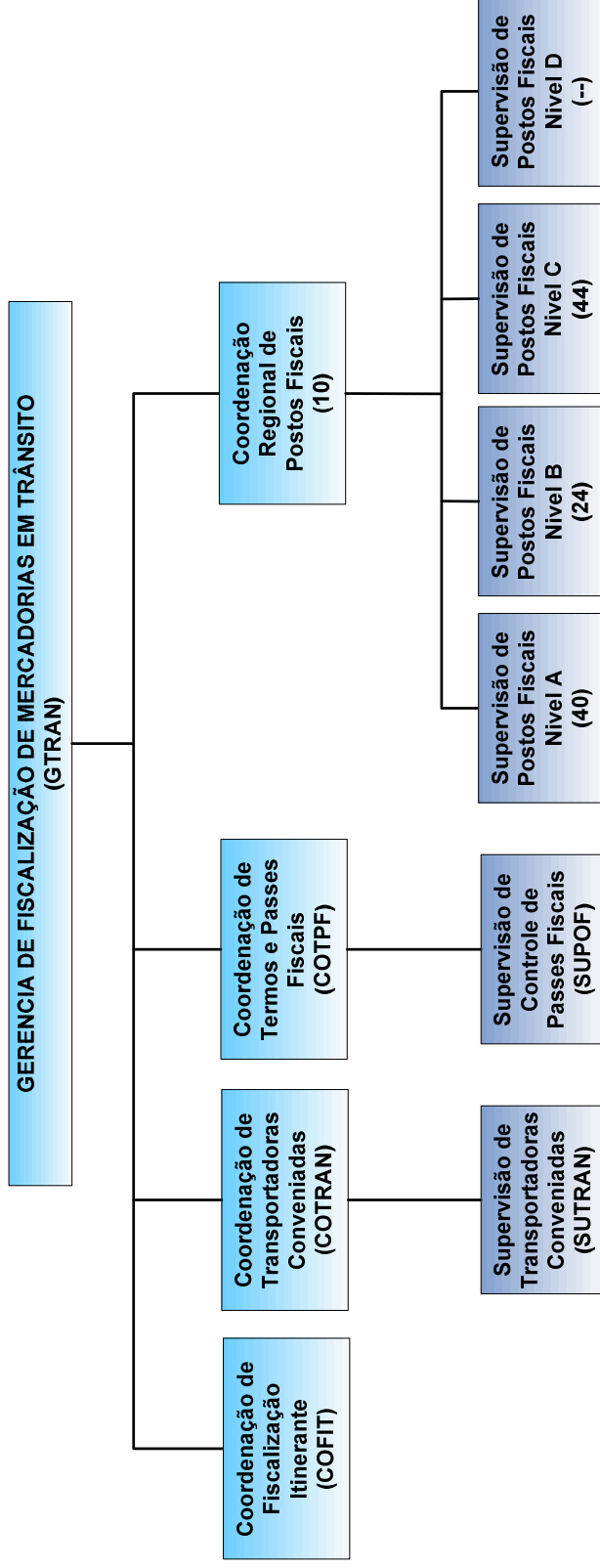


AGEAT NIVEL A = 13	
AGEAT NIVEL B = 15	
AGEAT NIVEL C = 17	
<b>TOTAL</b>	<b>= 45</b>









<u>P.F. Nível</u>	<u>Quant. P. F.</u>	<u>Quant./Tipo-Função</u>	<u>Tipo-Comissão</u>
P.F. Nível A	9	10 / Coordenadores	DAS - 2
P.F. Nível B	5	40 / Supervisores IV	DAI - 7
P.F. Nível C	13	24 / Supervisores IV	DAI - 7
P.F. Nível D	11	44 / Supervisores III	DAI - 6
		- / Sem Supervisão	-
<b>TOTAL</b>	<b>38</b>	<b>118</b>	

